

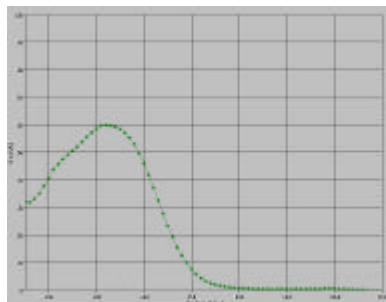
Solar Cell Relative Measurement Equipments

IPCE Measurement System

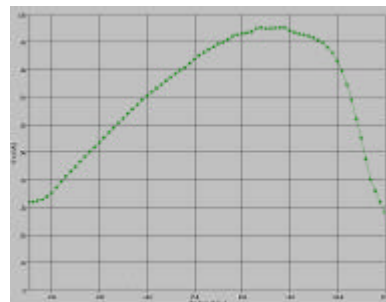
Incident Photon-to-Current Efficiency



- **Standard:** ASTM E1021 and IEC 60904-8
- **Function:** external and internal quantum efficiency measurement.
*Reflectance measurement system is needed for internal quantum efficiency.
- **Wavelength:** 400-800nm, 350-1050nm, 300-1500nm
- **Light Source:** 1000W Xenon Lamp
- **Sample Size:** 2cm
- **Automotive Filter Wheel:** eight filter positions
- **Monochromator:**
 - Focal Length: 110mm
 - Wavelength Precision: 0.2nm
 - Wavelength Accuracy: $\pm 0.6\text{nm}$
 - Stray Light: $<10^{-5}$
 - Range of Measurement: 400nm-800nm, 400-1000nm, 400-1650nm
- **Software:** HMTOptics for acquiring and analyzing data



Dye-sensitized Solar Cell



Si Solar Cell